

RoHS

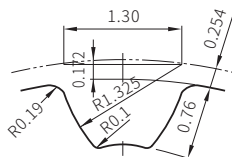


Type	皮帶寬度			材質		處理	附屬品 固定螺絲材質
	4.0mm S2M040	6.0mm S2M060	10.0mm S2M100	皮帶輪	法蘭		
GBSW	○	○	○	鋁合金	鋁合金	白陽極	SUS304
GBST	○	○	○			黑陽極	
GBSF	○	○	○			硬陽極	
GBSM	○	○	○			無電解鍍	
GBSB	○	○	-	≈S45C	SPCC	-	SCM435 (染黑)
GBSN	○	○	-			染黑	
GBSS	○	○	-			無電解鍍	

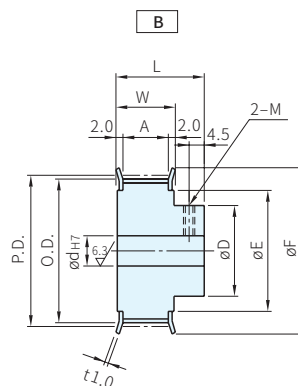
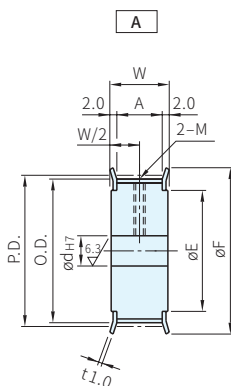
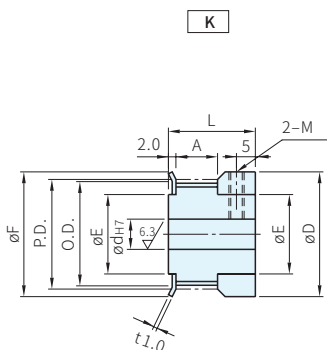
攻牙孔尺寸表

(軸孔:P·N)

d _{H7} 軸孔內徑	M 粗螺紋	附屬品 固定螺絲
3~5	M3	M3
6~24	M4	M4
25~30	M5	M5



(Pitch=2.0mm)



齒數

mm	14	15	16	18	20	22	23	24	25	26	28	30	32	34	36	40	44	48	50
P.D.	8.91	9.55	10.19	11.46	12.73	14.01	14.64	15.28	15.92	16.55	17.83	19.10	20.37	21.65	22.92	25.46	28.01	30.56	31.83
O.D.	8.40	9.04	9.68	10.95	12.22	13.50	14.13	14.77	15.41	16.04	17.32	18.59	19.86	21.14	22.41	24.96	27.50	30.05	31.32
D	12	12	14	14	16	18	18	20	20	22	22	22	12	14	14	18	20	20	20
F	12	12	14	14	16	18	18	20	20	22	22	22	25	25	28	30	32	35	35
E	6	6	8	8	10	11	11	13	13	14	14	14	16	16	18	20	23	25	25

Wa) 注意

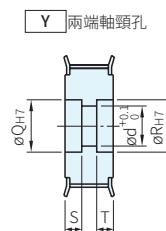
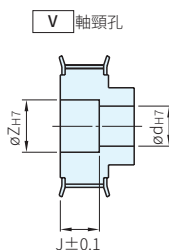
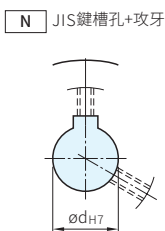
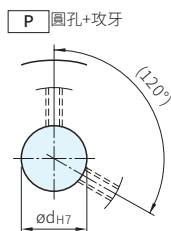
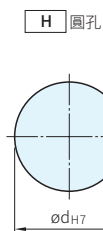
· 軸孔規格為P、N時，附攻牙孔和固定螺絲

軸孔規格

· 請從下表選出軸孔規格符號與各尺寸
· 軸孔內有可能沒有做表面處理

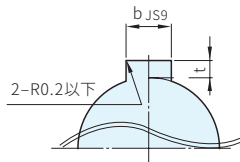
皮帶寬度

mm	No.		
	S2M040	S2M060	S2M100
A	5.0	7.0	11.0
W	9.0	11.0	15.0
L	17.0	19.0	23.0



鍵槽尺寸表

軸孔			鍵槽			
規格	軸孔	公差	b	js9	t	公差
N	8	+0.015	3	±0.0125	1.4	+0.1 0
N	10	0				
N	11~12	+0.018	4	±0.0150	1.8	
N	13~17		5		2.3	
N	18		6		2.8	
N	19~22	+0.021	6	±0.0150	3.3	
N	23~30		8			
N	31	+0.025	10	±0.0180	3.3	



型式		皮帶輪 形狀	皮帶輪形狀																	
Type	齒數		皮帶 寬度 No.	A							B·K									
				(~)指定單位1mm							(~)指定單位1mm									
			H	P	N	V		Y			H	P	N	V						
			d	d	d	V	Z	J 0.1mm	Y	Q·R	S·T 0.1mm	d	d	d	d	Z	J 0.1mm			
(鋁) GBSW GBST GBSF GBSM	14	S2M040	A	3·4			-	-	-	-	-	3·4	3·4							
	15			3·4									3·4	3·4						
	16			3-5	-	-	3	5			3	5								
	18			3-5			3	5			3	5								
	20			3-6			3·4	5·6			3·4	5·6								
	22			3-7			3-5	5-7			3-5	5-7								
	23			3-7			3-5	5-7			3-5	5-7								
	24			3-9			3-7	5-9			3-7	5-9								
	25			3-9			3-7	5-9			3-7	5-9								
	26			3-10			3-8	5-10			3-8	5-10								
(鋼) GBSB GBSN GBSS	28	S2M100	A	3-10			3-8	5-10	2.0 ≤ J ≤ W - 2.0	3-8	5-10	3-6 S+T ≤ W-3	3-8	3-8						
	30			3-10			3-8	5-10		3-8	5-10									
	32			4-12	4-10	8	4-10	6-12		4-10	6-12				4-8	4-6		4-6	6-8	
	34			4-12	4-10	8·10	4-10	6-12		4-10	6-12				4-10	4-8	-	4-8	6-10	
	36			4-14	4-10	8·10	4-12	6-14		4-12	6-14				4-10	4-8		4-8	6-10	
	40			4-16	4-12	8-12	4-14	6-16		4-14	6-16				4-14	4-10	8	4-12	6-14	2.0 ≤ J ≤ L - 2.0
	44			5-19	5-15	8-13	5-17	7-19		5-17	7-19				5-16	5-12	8-11	5-14	7-16	
	48			5-21	5-17	8-16	5-19	7-21		5-19	7-21				5-16	5-12	8-11	5-14	7-16	
	50			5-21	5-17	8-16	5-19	7-24		5-19	7-24				5-16	5-12	8-11	5-14	7-16	

訂貨: - - - - - - - - 交期: 天

(軸孔規格:H·P·N) GBSW40S2M040 - B - N10

(軸孔規格:V) GBSW50S2M060 - B - V10 - Z17 - J14.2

(軸孔規格:Y) GBSW34S2M100 - A - Y6 - Q10 - R10 - S3 - T3